

### ROOF CONSTRUCTION

- reclaimed slate tiles
- timber battens 25x38mm
- breather membrane
- timber counter battens 25x38mm
- triso-super 9 (layered insulation blanket by Actis UK - tel 01380 730 195)
- timber counter battens 25x38mm
- Panelvent external sheathing board or similar and approved
- timber rafters 300mm depth with insulation between rafters
- internal timber lining board Paneline or zero formaldehyde OSB
- vapour control layer
- galvanised steel rainwater goods (Lindab - 0121 550 5151)
- insect mesh

### WALL CONSTRUCTION 1

- render on 80mm Diffutherm external insulation
- 185mm studs with insulation between studs
- internal timber lining board Panelvent or zero formaldehyde OSB
- vapour control layer wrapped around the joists
- 44mm hemp insulation between battens
- 12mm ply as wall finish

### ACOUSTIC FLOORING - Fermacell System

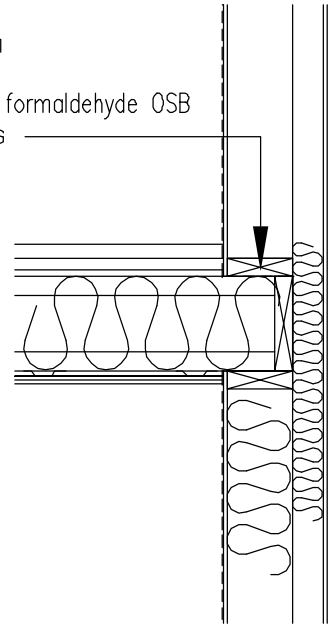
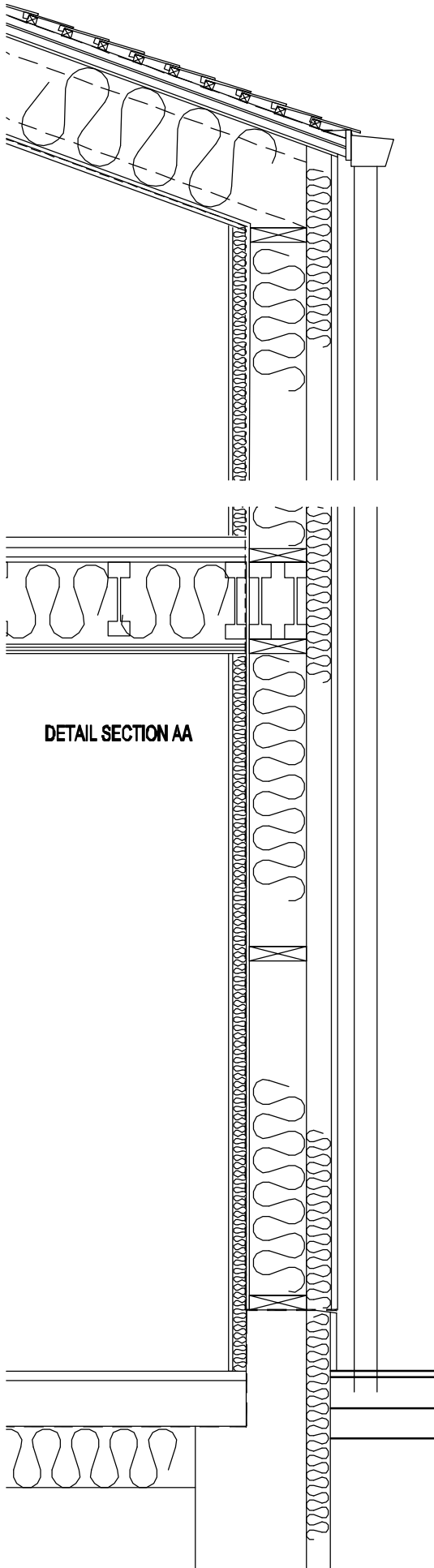
2FCH-25

- 2 layers of 10mm Fermacell board fixed to timber joists with Protektor TPS25

Acoustic Ceiling system

- timber joists with cellulose fibre insulation

- 22mm zero-formaldehyde chipboard
- Fermacell Honeycomb and honeycomb infill layer
- E31 woodfibre acoustic flooring as top layer



DETAIL SECTION EE

DRAWING			
<b>SECTION THROUGH WALL AND ROOF</b>			
PROJECT			
<b>REAR OF 47 ELM STREET</b>			
SCALE	DATE	DRAWING NO.	REV.
1:20	28-11-05	ESLB - 33	-
<b>SASSI CHAMBERLAIN ARCHITECTS</b>			
14 VICARAGE ROAD, TEDDINGTON TW11 BEZ			
T 020 8977 4180 - F 020 8977 8355 - M 0078998166			